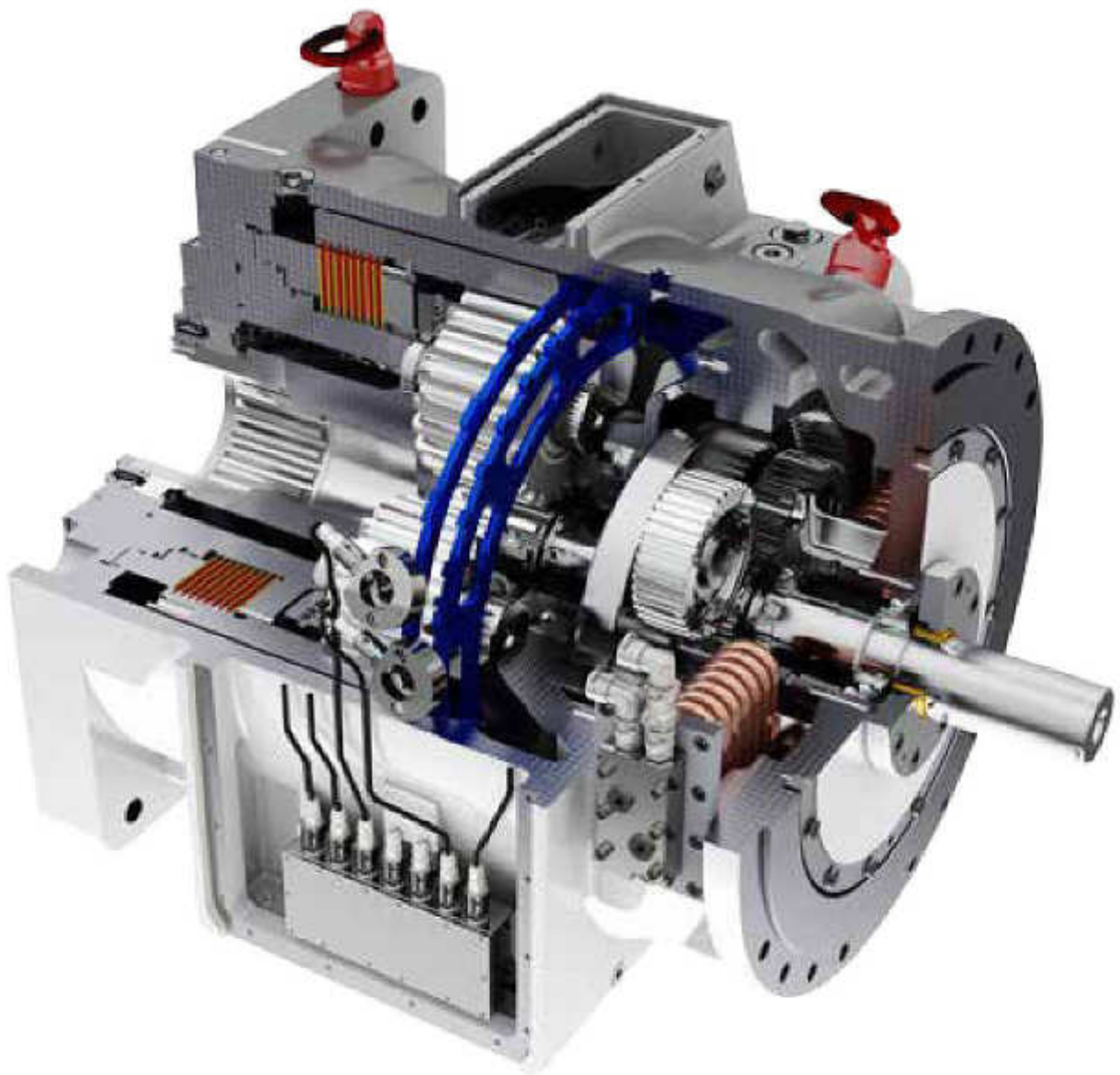




# Wolfgang Preinfalk GmbH

## Drive Solutions



## Content

About us .....	2
Underground mining .....	5
AFC's stage loader .....	6
Belt conveyor .....	15
Roadheader .....	24
Elevator system .....	28
 Open pit mining .....	 31
Belt conveyor .....	32
Crusher .....	33
Continuous miner .....	35
 Power plant .....	 39
Crane .....	40
 Steel .....	 43
Crane .....	44
 Wind .....	 47
Pitch .....	48
Azimuth .....	49
 Offshore .....	 51
Jack-up vessels .....	52
Tidal power plant .....	53
 Harbour .....	 56
 Industry .....	 59
Sugar mill .....	60
Paper mill .....	61
Foil production .....	63



St. Ingbert - Germany

## About us

We are an independent solution specialist for gear technology, gearboxes and complete drive units. Almost all of the work steps in the manufacturing process are performed in-house at our headquarters in St. Ingbert.

## Expertise

- Consulting and engineering
- Procurement of high-quality certified material
- Manufacturing, assembly and test bench run
- Installation, instruction and training

## Certification

- Certified according to DIN ISO 9001: 2008
- Cooperation with all major classification societies: ABS, DNV GL, LR, BV, CCS, RS
- Certification for use in hazardous locations: ATEX, MA, GOST

## Service & After Sales

- Experienced technicians active worldwide
- Inspection and damage diagnostics
- Preventive solutions
- Upgrades and modifications
- Spare parts stockage

## Your benefit

- Independent R&D department
- State of the art machinery
- Use of material with European Wcertificate of origin
- High requirements for material quality of casted components, shafts and gearing components
- Own heat treatment facility
- Usage of FAG, SKF and NSK quality bearings
- Temper etching test
- Worldwide sales and service network





Video  
company  
walk



## Our business segments

### Gear manufacturing

- Mining
- Harbour
- Steel
- Offshore
- Power plant
- Wind
- Industry

### Tooth gear production for OEM

- Wind energy
- Engines for vessels

### Spare parts

- Own- and external gears
- Longwall hydraulics
- Jetting / cooling

### High-pressure pump systems

- Industry
- Longwall hydraulics
- Jetting / cooling

### Drive systems

Modular structured system solutions:

- Gears
- Coupling/brake system
- Motor

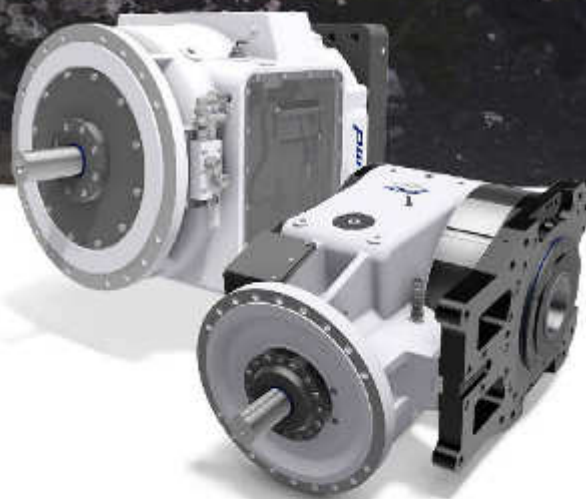


# Mining Underground

AFC's stage loader  
Crusher  
Belt conveyor  
Roadheader  
Elevator system



## AFC's stage loader Crusher





Mining ► Underground

AFC's stage loader  
**2SP 260 x 36**  
2- stages planetary gearbox



## References

Supplied to customers in  
• China

For more detailed information please contact our sales agent.

## Technical data

Rated power	P	200 kW
Input speed	n1	1470 min <sup>-1</sup>
Output speed	n2	40.8 min <sup>-1</sup>
Ratio	i	36:1
Output torque	T2	47 kNm
Weight		2400 kg





Mining ► Underground

AFC's stage loader

# PKPL 15 - 85

Bevel helical planetary gearbox



Other sizes available on request

## References

Hundreds of gearboxes have been delivered to customers in

- China
- Germany
- Poland
- Ukraine
- Australia
- Czech Republic
- Turkey

For more detailed information please contact our sales agent.

## Technical data

Rated power	P	315 - 1500	kW
Input speed	n1	1470 - 1470	min <sup>-1</sup>
Output speed	n2	70 - 37.7	min <sup>-1</sup>
Ratio	i	21 - 39	:1
Output torque	T2	43 - 381	kNm
Weight		2000 - 12900	kg





Mining ► Underground

AFC's stage loader

# PSPL 15 - 85

Planetary gearbox



Other sizes available on request

## Technical data

Rated power	P	250 - 1500	kW
Input speed	n1	1470 - 1470	min <sup>-1</sup>
Output speed	n2	70 - 37,7	min <sup>-1</sup>
Ratio	i	21 - 39	:1
Output torque	T2	34 - 382	kNm
Weight		1200 - 8026	kg

## References

Hundreds of gearboxes have been delivered to customers in

- China
- Germany
- Poland
- Ukraine
- Australia
- Czech Republic
- Turkey

For more detailed information please contact our sales agent.

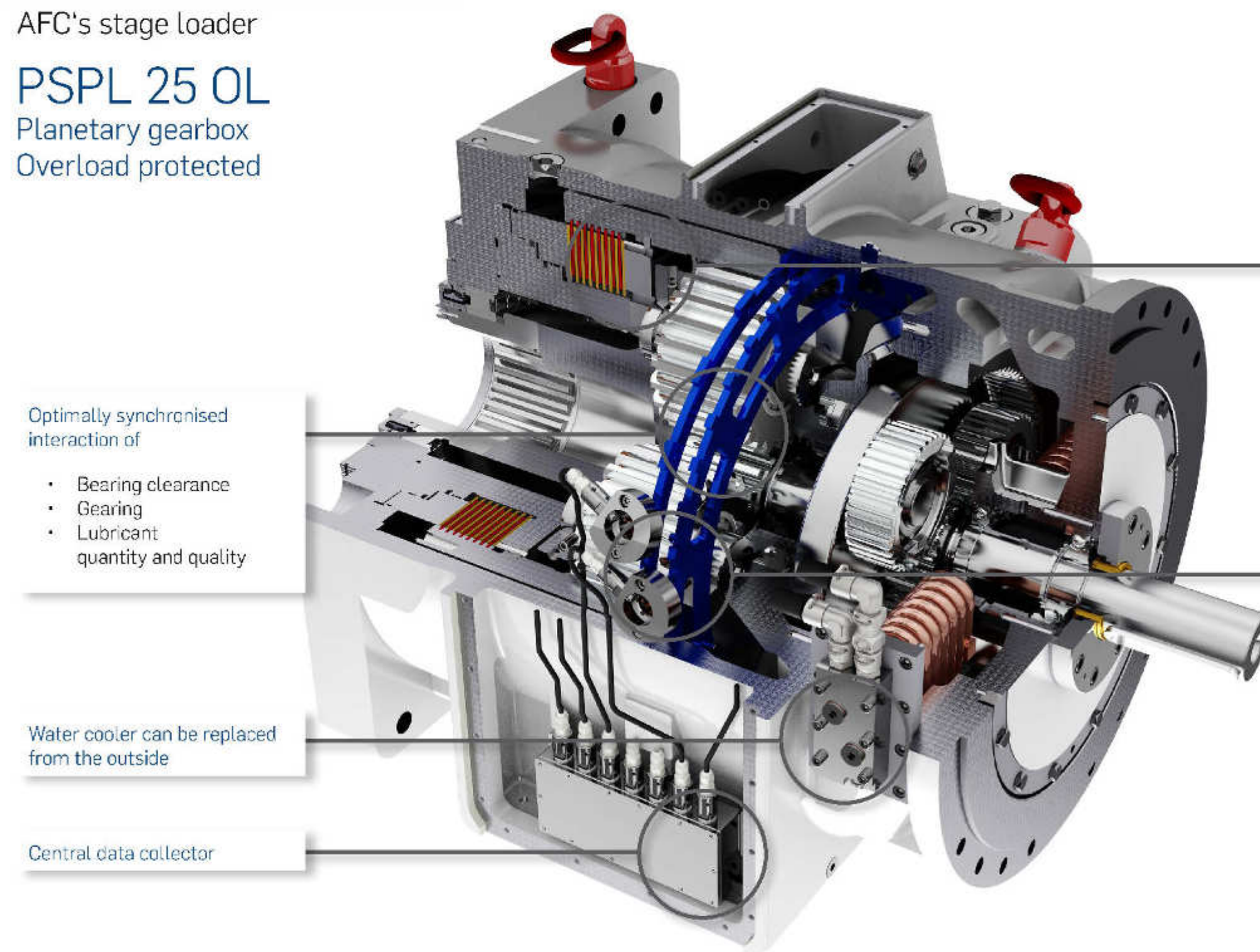


AFC's stage loader

## PSPL 25 OL

Planetary gearbox  
Overload protected

Video  
Gearbox  
in motion



Optimally synchronised  
interaction of

- Bearing clearance
- Gearing
- Lubricant quantity and quality

Water cooler can be replaced  
from the outside

Central data collector

Adjustable torque limiter  
at the output side

Sensor system for  
detecting slip due  
to overload

### Technical data

Drive output	600 - 800	kW
Ratio	18 - 33	:1
Output torque nominal	62,3 - 172	kNm
Weight	4400	kg
Input speed	1470	min <sup>-1</sup>
Output speed	92 - 44,5	min <sup>-1</sup>





Mining ► Underground

Crusher

# P 1 K 600

Gearbox for crusher



## References

Supplied to customers in

- Australia
- China

For more detailed information please contact our sales agent.

## Technical data

Rated power	P	400 kW
Input speed	n1	1485 min <sup>-1</sup>
Output speed	n2	418.5 min <sup>-1</sup>
Ratio		i= 3,55
Output torque	T2	9 kNm
Weight		2650 kg

Belt conveyor





Mining ► Underground

Belt conveyor

## K2 SH 450 N

Bevel helical gearbox



### References

Supplied to customers in

- Poland

For more detailed information please contact our sales agent.

### Technical data

Rated power	P	400 kW
Input speed	n1	1470 min <sup>-1</sup>
Output speed	n2	60.3 min <sup>-1</sup>
Ratio	i	24 :1
Output torque	T2	63 kNm
Weight		3400 kg



Mining ► Underground

Belt conveyor

# K1 SH 450 N

Bevel helical gearbox



## Technical data

Rated power	P	250 kW
Input speed	n1	1470 min <sup>-1</sup>
Output speed	n2	60,3 min <sup>-1</sup>
Ratio	i	24 :1
Output torque	T2	40 kNm
Weight		2820 kg

## References

Supplied to customers in

- Poland

For more detailed information please contact our sales agent.

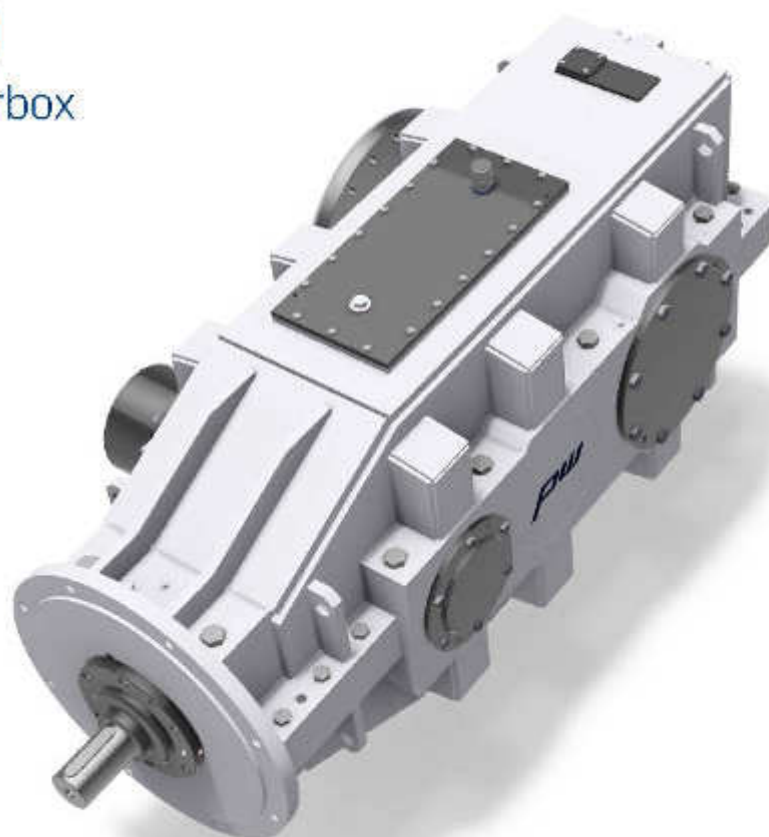


Mining ► Underground

Belt conveyor

## K2 SF 500

Bevel helical gearbox



### References

Supplied to customers in

- Poland

For more detailed information please contact our sales agent.

### Technical data

Rated power	P	500 kW
Input speed	n1	1470 min <sup>-1</sup>
Output speed	n2	37.7 min <sup>-1</sup>
Ratio	i	39 :1
Output torque	T2	127 kNm
Weight		5900 kg



Mining ► Underground

Belt conveyor

**K2 S 450 F**

Bevel helical gearbox



## Technical data

Rated power	P	400 kW
Input speed	n1	1500 min <sup>-1</sup>
Output speed	n2	70,8 min <sup>-1</sup>
Ratio	i	21 :1
Output torque	T2	54 kNm
Weight		3700 kg

## References

Supplied to customers in

- Turkey

For more detailed information please contact our sales agent.



Mining ► Underground

Belt conveyor

## K1 S 450 F

Bevel helical gearbox



### References

Supplied to customers in

- Poland

For more detailed information please contact our sales agent.

### Technical data

Rated power	P	250 kW
Input speed	n1	1470 min <sup>-1</sup>
Output speed	n2	69.5 min <sup>-1</sup>
Ratio	i	21 :1
Output torque	T2	34 kNm
Weight		3000 kg



Mining ► Underground

Belt conveyor

## Sprocket Wheel Assembly



Sprocket wheel assembly available  
in different types.  
Up to chain size:  
42 x 137 mm

### References

Supplied to customers in

- China

For more detailed information please contact our sales agent.



## Belt conveyor

# K2 SF 560

## Bevel helical gearbox

Central oil supply system

Optimally synchronised  
interaction of

- Bearing clearance
- Gearing
- Lubricant quantity and quality

Load dependent  
back-stop device

Spherical roller bearings

A pair of tapered  
roller bearings in  
X-arrangement

## Technical data

Drive output	1,000 kW
Ratio	i=28
Gear weight	7,800 kg
Nominal output torque	180,000 Nm



## References

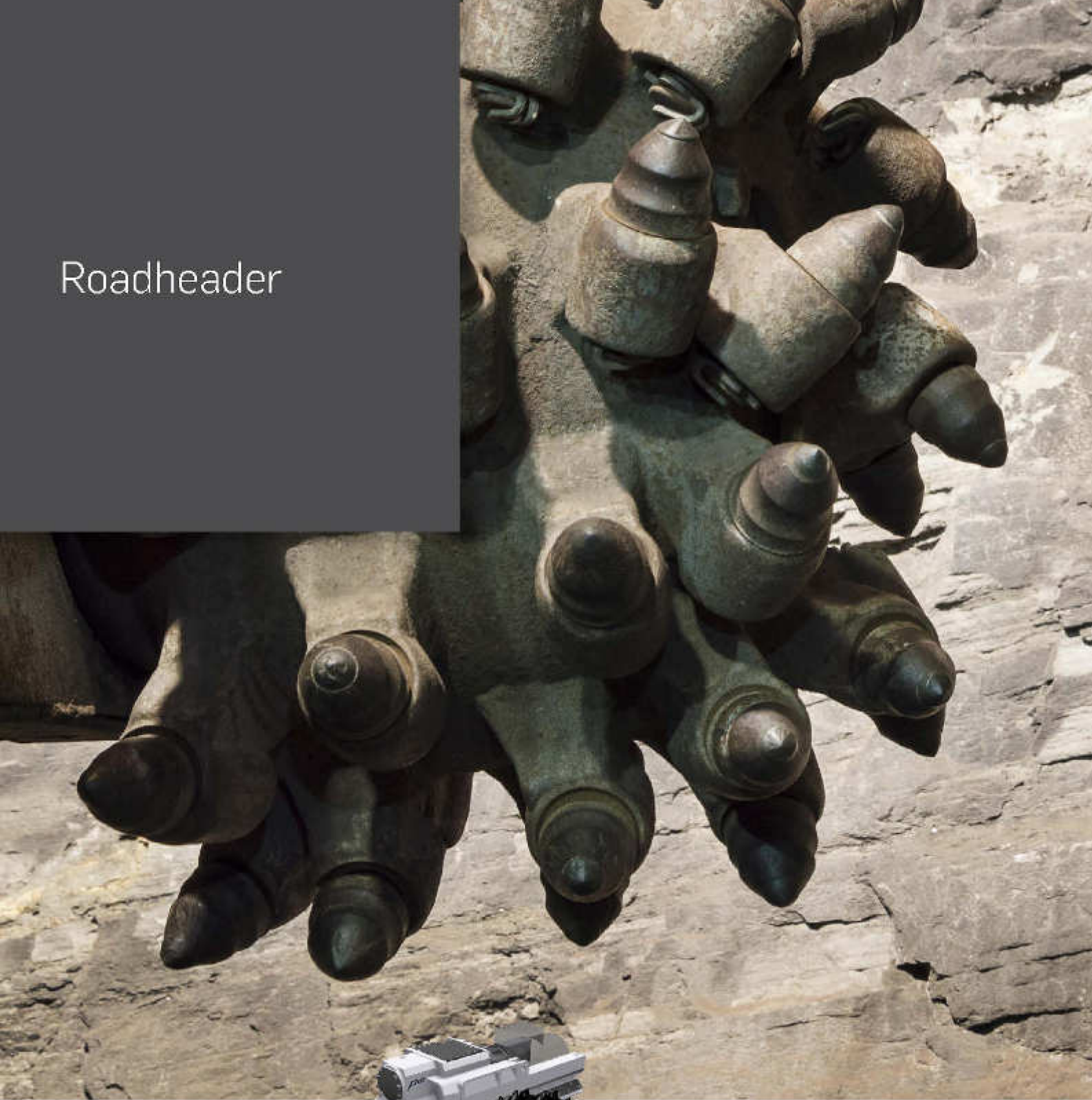
Specifically designed for drive units at the highest technical level for a large underground conveyor system used for coal mining.

Supplied to customers in  
• Germany

For more detailed information  
please contact our sales agent.



# Roadheader







Mining ► Underground

Roadheader

## PCG 360 - 210 x 80

cutting gear



### Technical data

Rated power	P	360 kW
Input speed	n1	1470 min <sup>-1</sup>
Output speed	n2	18,4 min <sup>-1</sup>
Ratio	i	80 :1
Output torque	T2	187 kNm
Weight		6200 kg

### References

Supplied to customers in

- China

For more detailed information please contact our sales agent.

Mining ► Underground

Roadheader

## PCG 410 - 260 x 80

Cutting gear

Video  
Gearbox  
in motion



### References

Supplied to customers in

- Germany

For more detailed information please contact our sales agent.

### Technical data

Rated power	P	410 kW
Input speed	n1	1470 min <sup>-1</sup>
Output speed	n2	18.3 min <sup>-1</sup>
Ratio	i	80 :1
Output torque	T2	213 kNm
Weight		11000 kg



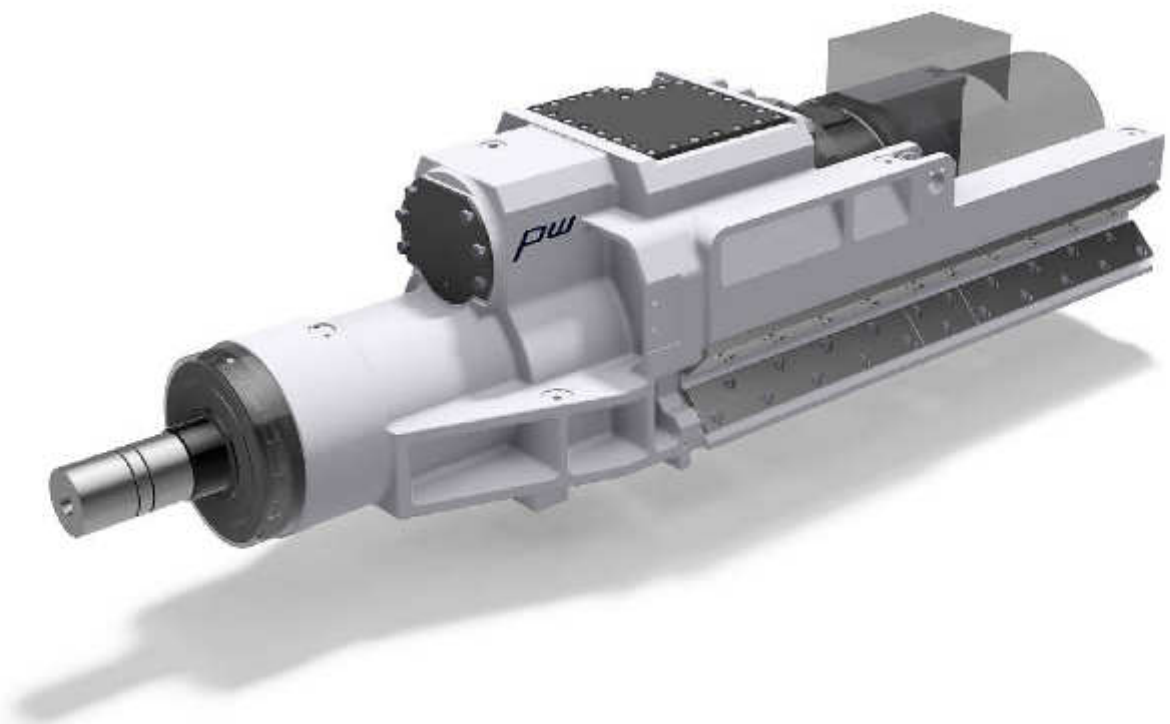


Mining ► Underground

Roadheader

## P3 SCG 160 - 360 x 46

Cutting gear



### Technical data

Rated power	P	160 kW
Input speed	n1	1470 min <sup>-1</sup>
Output speed	n2	32,0 min <sup>-1</sup>
Ratio	i	46 :1
Output torque	T2	48 kNm
Weight		6100 kg

### References

Supplied to customers in

- Ukraine

For more detailed information please contact our sales agent.

## Elevator system





Elevator system

1 SP 370 x 11

Gearbox with integrated brake for passenger elevator



## Technical data

Rated power	P	2000 kW
Input speed	n1	750 min <sup>-1</sup>
Output speed	n2	67.1 min <sup>-1</sup>
Ratio	i	11 :1
Output torque	T2	285 kNm
Weight		18000 kg

## References

Supplied to customers in

- China

For more detailed information please contact our sales agent.



Mining  
Open pit

Belt conveyor  
Crusher  
Continuous miner



Mining ► Open pit



Belt conveyor

## K1 SF 800

Bevel helical gearbox



### References

Supplied to customers in

- Poland

For more detailed information  
please contact our sales agent.



### Technical data

Rated power	P	1250 kW
Input speed	n1	1000 min <sup>-1</sup>
Output speed	n2	72,0 min <sup>-1</sup>
Ratio	i	14 :1
Output torque	T2	166 kNm
Weight		12700 kg

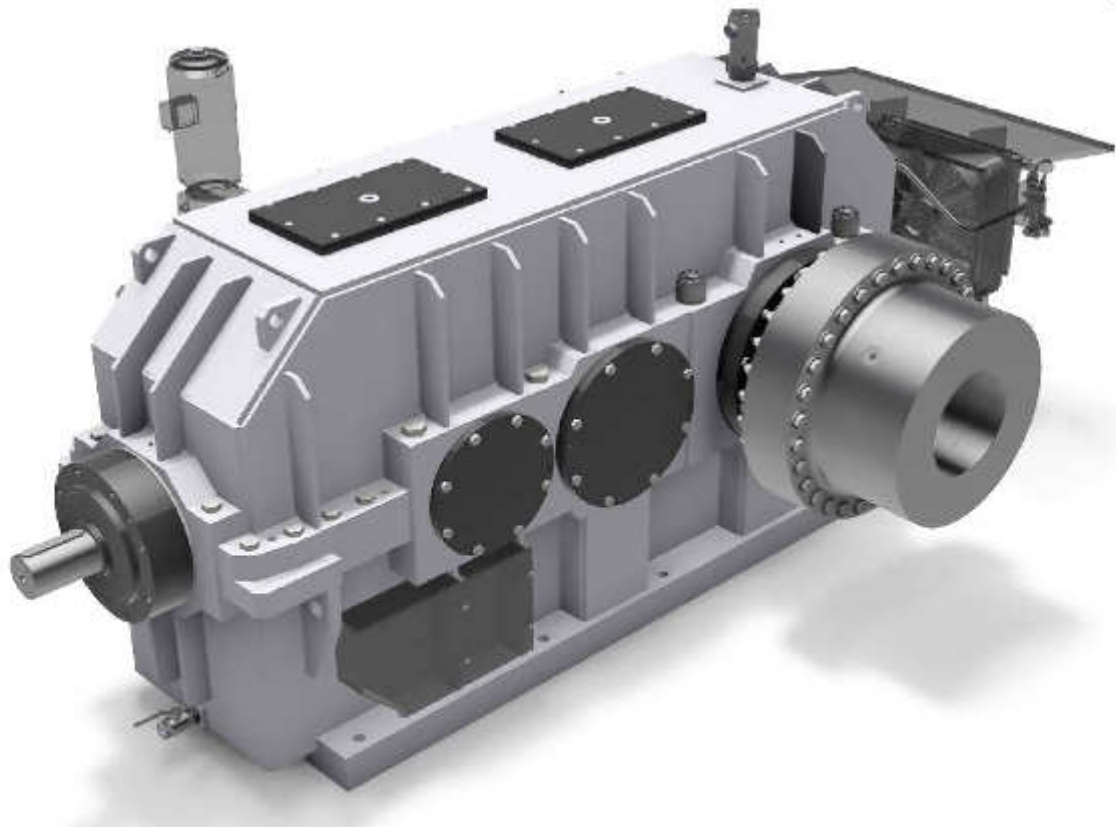


Mining ► Open pit

Crusher

## K2 SF 900

Bevel helical gearbox



### Technical data

Rated power	P	800 kW
Input speed	n1	1748 min <sup>-1</sup>
Output speed	n2	55.7 min <sup>-1</sup>
Ratio	i	31 :1
Output torque	T2	137 kNm
Weight		22370 kg



### References

Supplied to customers in  
• Brazil

For more detailed information  
please contact our sales agent.



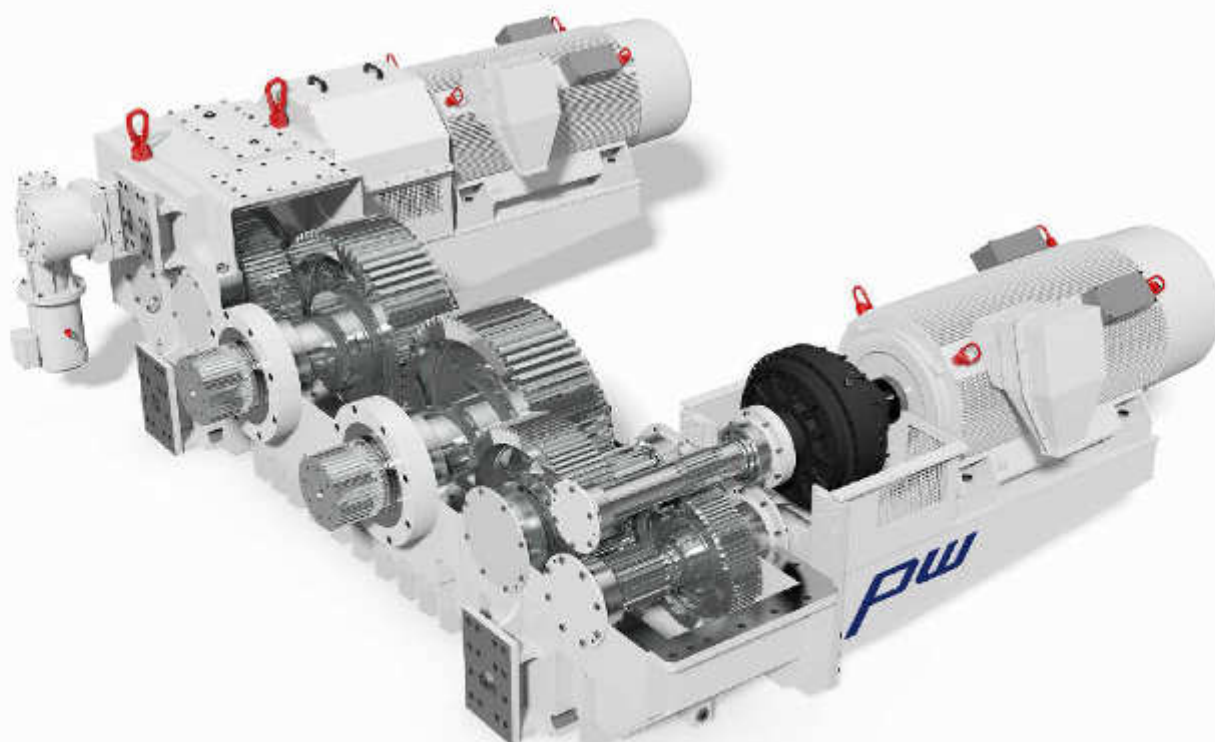
Mining ► Open pit



Crusher

# 2 x 3 S 780

Two combined drive units



## References

Supplied to customers in

- Germany

For more detailed information  
please contact our sales agent.



## Technical data

upon request



Mining ► Open pit

Continuous miner  
**PS-2SKP 185 - 30**  
Cutting gear



### Technical data

Rated power	P	340 kW
Input speed	n1	1470 min <sup>-1</sup>
Output speed	n2	49.2 min <sup>-1</sup>
Ratio	i	30 :1
Output torque	T2	66 kNm
Weight		5800 kg



### References

Supplied to customers in  
• China

For more detailed information  
please contact our sales agent.



Mining ► Open pit

Continuous miner

## PF - 3P 140 x 180

Driving gear



### References

Supplied to customers in

- China

For more detailed information  
please contact our sales agent:



### Technical data

Rated power	P	39 kW
Input speed	n1	930 min <sup>-1</sup>
Output speed	n2	5,2 min <sup>-1</sup>
Ratio	i	179 :1
Output torque	T2	72 kNm
Weight		785 kg



Mining ► Open pit

Continuous miner

## PL - KPSK 500 x 36

Loading gear



### Technical data

Rated power	P	37 kW
Input speed	n1	1470 min <sup>-1</sup>
Output speed	n2	40.2 min <sup>-1</sup>
Ratio	i	37 :1
Output torque	T2	10 kNm
Weight		630 kg



### References

Supplied to customers in  
• China


For more detailed information  
please contact our sales agent.



A photograph of a power plant featuring two prominent, tall, grey concrete cooling towers. The tower on the left has several horizontal bands of reddish-brown paint. Between the towers is a complex network of blue-painted metal scaffolding and pipes. The background is a clear blue sky. In the foreground, there are some palm trees and a fence.

Power plant

Crane



Power plant

Crane

3 S 315 x 61

Drive gears



## References

Supplied to customers in

- Germany

For more detailed information  
please contact our sales agent.



## Technical data

Rated power	P	45 kW
Input speed	n1	1830 min <sup>-1</sup>
Output speed	n2	30 min <sup>-1</sup>
Ratio	i	61 :1
Output torque	T2	14.3 kNm
Weight		620 kg





Power plant

Crane

K 4S 560 x 400

Lift gears



## Technical data

Rated power	P	75 kW
Input speed	n1	1750 min <sup>-1</sup>
Output speed	n2	4,3 min <sup>-1</sup>
Ratio	i	400 :1
Output torque	T2	167 kNm
Weight		4630 kg



## References

Supplied to customers in  
• Germany

For more detailed information  
please contact our sales agent.



A large industrial steel mill with a massive curved steel beam being processed. The beam is dark brown and curved, resting on a yellow support structure. The background shows a complex network of steel beams and trusses, with bright lights illuminating the scene. The overall atmosphere is industrial and heavy.

Steel

Crane





Steel

Crane

3 S 280 x 18

Drive gears

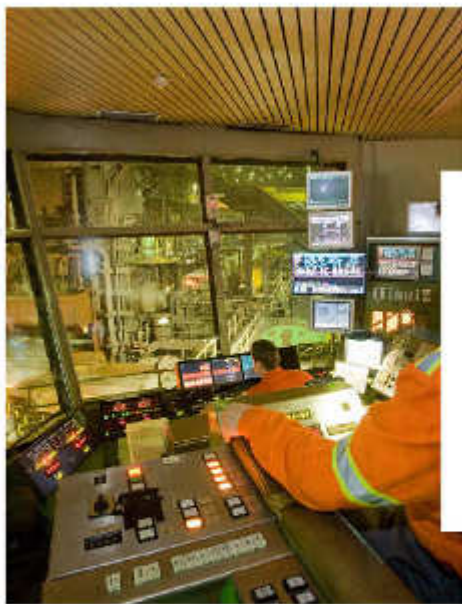


## References

Supplied to customers in

- Germany

For more detailed information  
please contact our sales agent.



## Technical data

Rated power	P	75 kW
Input speed	n1	739 min <sup>-1</sup>
Output speed	n2	41,1 min <sup>-1</sup>
Ratio	i	18 :1
Output torque	T2	17 kNm
Weight		800 kg

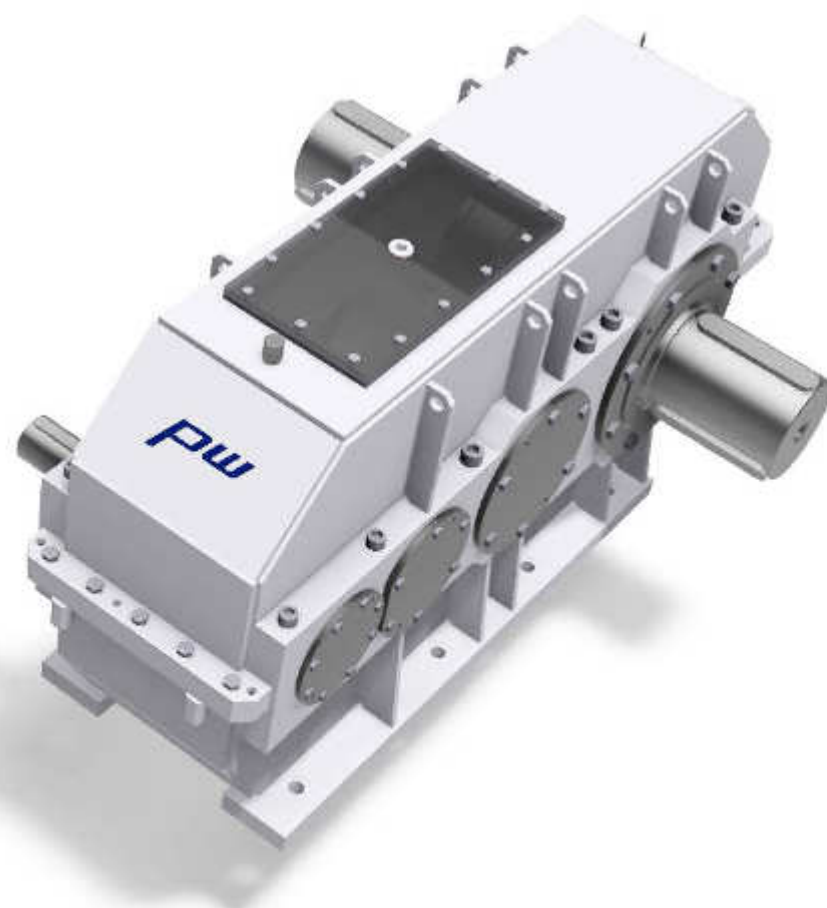


Steel

Crane

# 3 S 425 x 78 So

Drive gears



## Technical data

Rated power	P	132 kW
Input speed	n1	1000 min <sup>-1</sup>
Output speed	n2	12,8 min <sup>-1</sup>
Ratio	i	78 :1
Output torque	T2	99 kNm
Weight		1650 kg



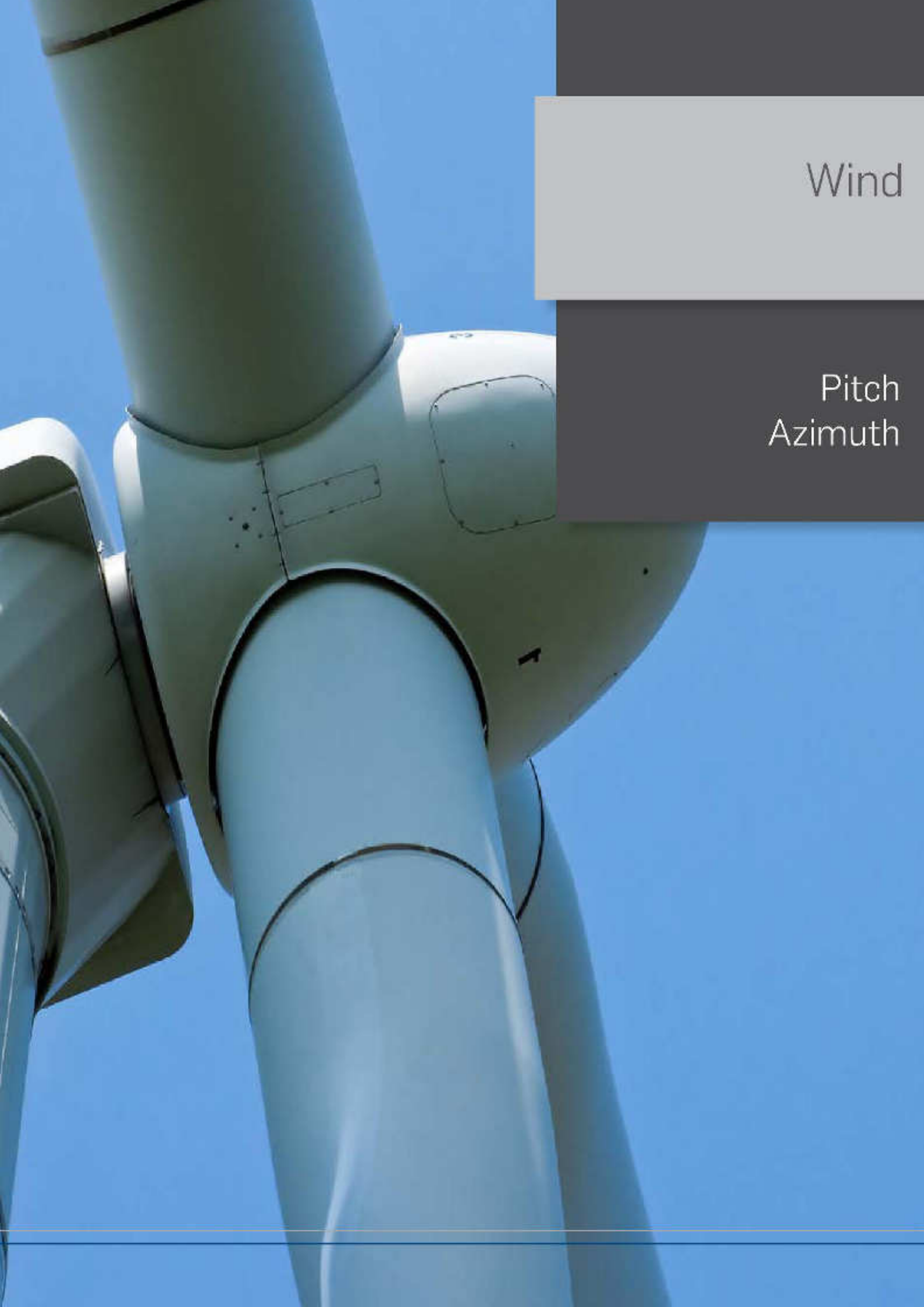
## References

Supplied to customers in

- Germany

For more detailed information  
please contact our sales agent.





Wind

Pitch  
Azimuth

Wind

Pitch

# 3 P 76 x 140

Pitch gears



## References

Supplied to customers in

- Germany

For more detailed information  
please contact our sales agent:



## Technical data

Power	P	4,5 kW
Input speed	n1	0-2500 min <sup>-1</sup>
Output speed	n2	0-17,6 min <sup>-1</sup>
Ratio	i	142,22 :1
Output torque nominal	T2	2441 Nm
Output torque dynamic	T2	6846 Nm
Output torque max.	T2	14246 Nm
Weight		198 kg



Wind

Azimuth

## 4 P 100 x 1100 So

Azimuth gears



### Technical data

Power	P	4,8 kW
Input speed	n1	950 min <sup>-1</sup>
Output speed	n2	0,864 min <sup>-1</sup>
Ratio	i	1100 :1
Output torque nominal	T2	132500 Nm
Output torque dynamic	T2	53000 Nm
Weight		840 kg



### References

Supplied to customers in

- Germany


For more detailed information  
please contact our sales agent

A large white jack-up vessel with a blue hull is positioned in the water. It is lifting a massive, dark-colored cylindrical structure with a red top section. The vessel's legs are extended, and its deck is covered with complex metal scaffolding and cranes. The scene is set against a sunset sky with orange and yellow hues. The water is calm, reflecting the light from the sky.

Offshore

Jack-up vessel  
Tidal power plant





Offshore

Jack-up vessels

# 3S 415 Z x 110 So

Jack-up gearbox



## References

Supplied to customers in

- Germany

For more detailed information  
please contact our sales agent.



## Technical data

Input speed	n1	3000 min <sup>-1</sup>
Output speed	n2	27.2 min <sup>-1</sup>
Ratio	i	110 :1
Output torque dynamic	T2	39.2 kNm
Output torque static	T2	98.8 kNm
Weight		1913 kg

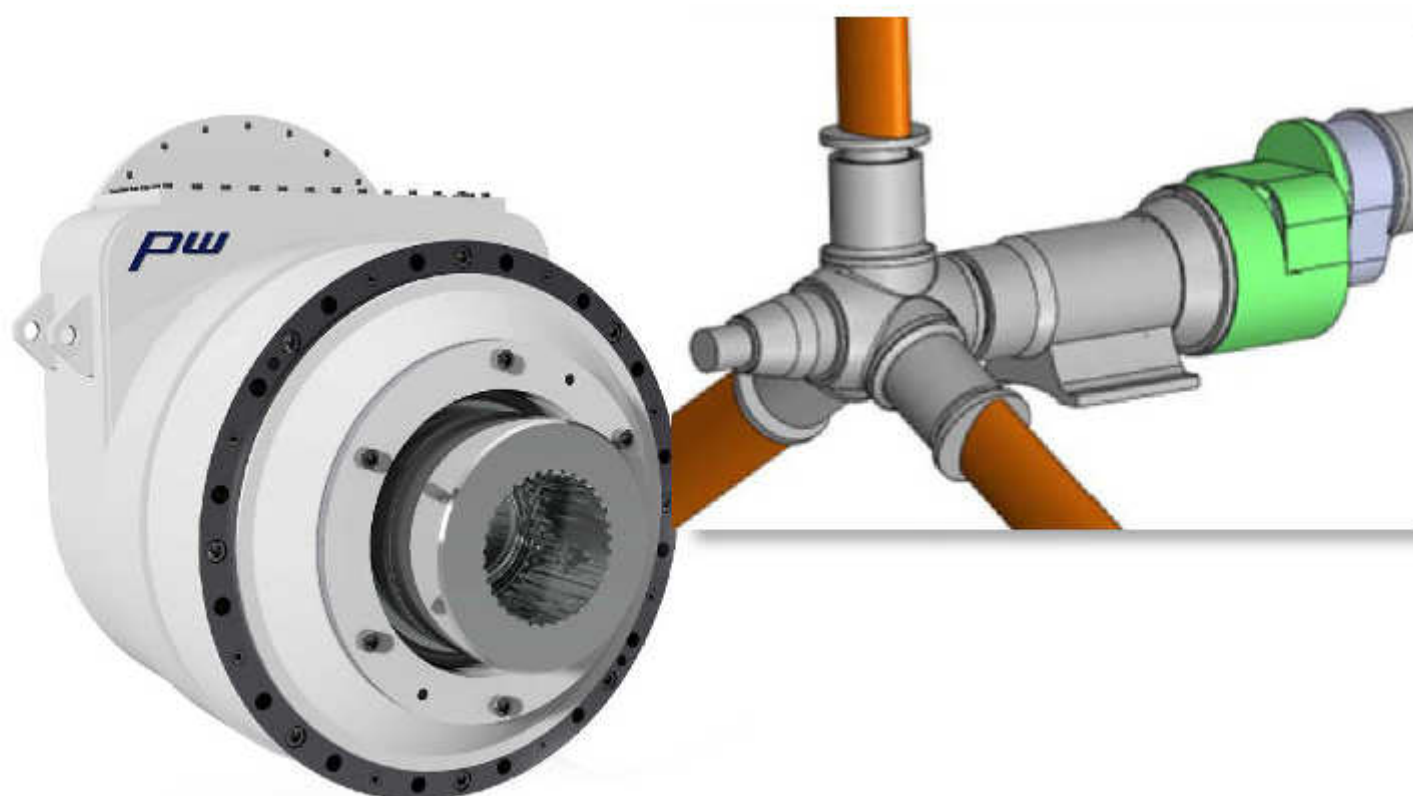


Offshore

# Tidal power plant

## 2SP 215 x 90

Gearbox for turbines



### Technical data

Rated power	P	313 kW
Input speed	n1	28,8 min <sup>-1</sup>
Output speed	n2	2574 min <sup>-1</sup>
Ratio	i	90 :1
Output torque	T2	1,17 kNm
Input torque	T1	105 kNm
Weight		2450 kg



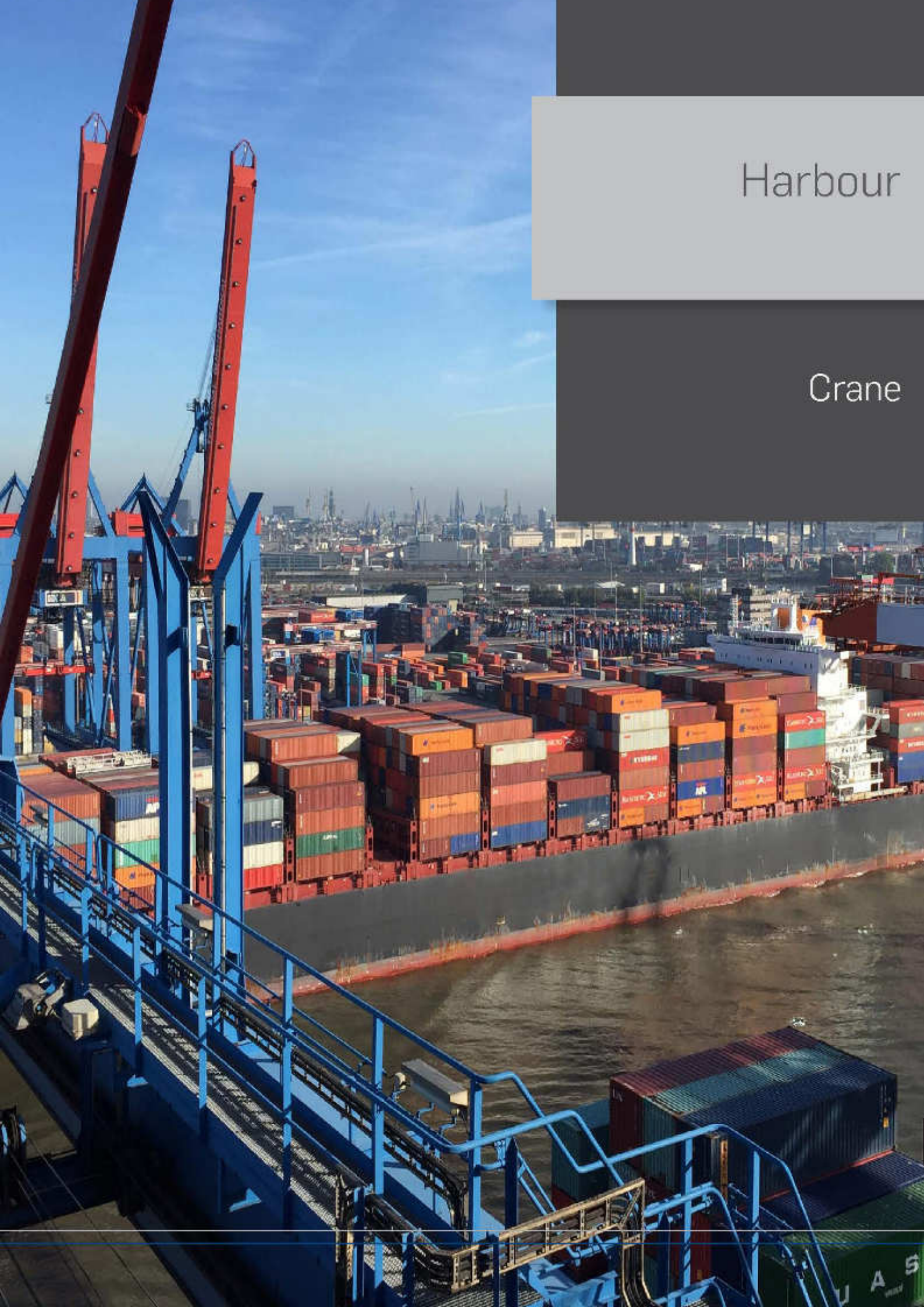
### References

Supplied to customers in

- Germany

For more detailed information  
please contact our sales agent.



A high-angle photograph of a busy port. In the foreground, a blue metal walkway with railings leads towards the water. To the left, two large red container cranes are visible. The middle ground is filled with numerous stacks of colorful shipping containers (red, orange, blue, green) on the deck of a large container ship. The ship is docked at a pier. In the background, a city skyline with various buildings and more cranes is visible under a clear blue sky.

Harbour

Crane



## References

Drive gearbox 2020 for gantry crane

PW type: K2SH210x58

36 pcs. for each of left & right output

$P = 18,5 \text{ kW}$  /  $n_1 = 1.450 \text{ min}^{-1}$  / Ratio  $i = 58,15$

Trolley travelling gearbox 2420 for container crane

PW type: K1SH200x16

6 pcs. for each of left & right output

$P = 66 \text{ kW}$  /  $n_1 = 1.510 \text{ min}^{-1}$  / Ratio  $i = 15,875$

Hoist gearbox 3020 for container crane

PW type: 3SZ490x32

3 pcs. for each of left & right output.

$P = 300 \text{ kW}$  /  $n_1 = 840 \text{ min}^{-1}$  / Ratio  $i = 31,478$

Hoist gearbox 3420 for container crane

PW type: 3SH520x63

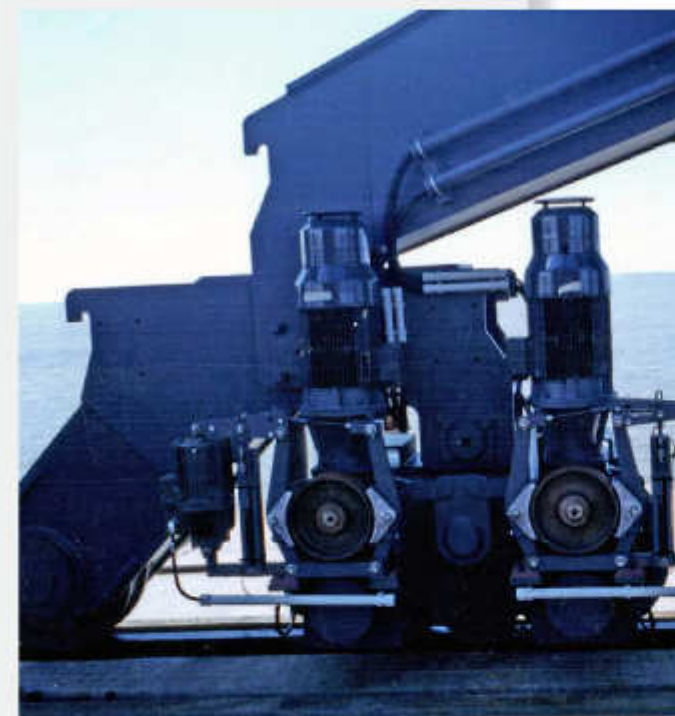
3 pcs. for each of left & right output

$P = 230 \text{ kW}$  /  $n_1 = 1.060 \text{ min}^{-1}$  / Ratio  $i = 63,234$

Supplied to customers in

- Germany

For more detailed information  
please contact our sales agent.





A photograph of a large industrial facility, likely a sugar or paper mill, at night. The scene is dominated by several tall, dark vertical structures, including a central smokestack and several distillation columns. These structures are illuminated by numerous bright lights, creating a stark contrast against the dark sky. The foreground shows a complex network of pipes, walkways, and structural steel, also lit up. The overall atmosphere is one of intense industrial activity.

Industry

Sugar mill  
Paper mill  
Foil production



Industry

Sugar mill

1S 355 x 5

Turbo gears



References

Supplied to customers in  
• Mexico

For more detailed information  
please contact our sales agent.



Technical data

Rated power	P	3200 kW
Input speed	n1	8914 min <sup>-1</sup>
Output speed	n2	1800.8 min <sup>-1</sup>
Ratio	i	5 :1
Output torque	T2	17 kNm
Weight		1612 kg





Industry

Paper mill

## ASG 2810 - SL x 3,15 (double)

Shaft-mounted gears for transport of paper rolls



### Technical data

Rated power	P	1472 kW
Input speed	n1	820 min <sup>-1</sup>
Output speed	n2	280,8 min <sup>-1</sup>
Ratio	i	3 : 1
Output torque	T2	54 kNm
Weight		1730 kg



### References

Supplied to customers in  
• Germany

For more detailed information  
please contact our sales agent.

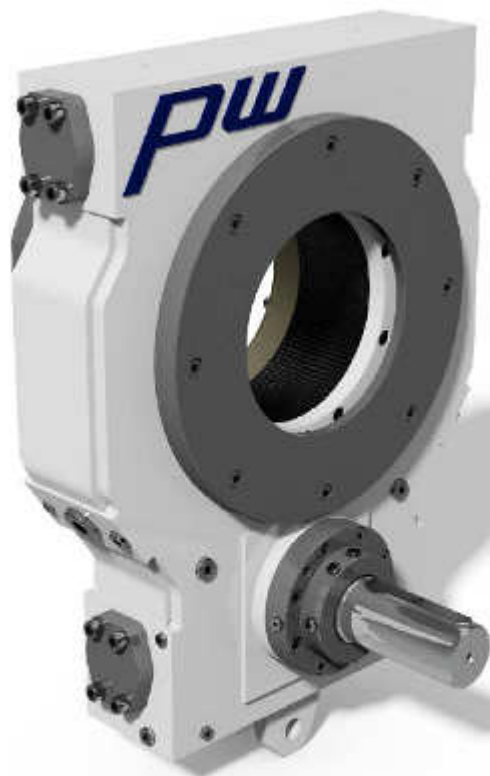


Industry

Paper mill

# ASG 420 (single)

Shaft-mounted gears for transport of paper rolls



## References

Supplied to customers in

- Germany

For more detailed information  
please contact our sales agent.



## Technical data

Rated power	P	188 kW
Ratio	i	3,1515 :1
Output torque	T2	3.96 kNm
Weight		255 kg





Industry

Foil production

## 2 EX SZ 874 -142 x1

Gearbox for screw extruder



### Technical data

Rated power	P	2200 kW
Input speed	n1	300 min <sup>-1</sup>
Output speed	n2	300 min <sup>-1</sup>
Ratio	i	1 : 1
Output torque	T2	2 x 35 kNm
Weight		17.000 kg
Axial force max		2 x 275 kN



### References

Supplied to customers in  
• Germany

For more detailed information  
please contact our sales agent.